



▲ Tilefix ▲ Specrite

▲ Estimator ▲ BIM

Visit marley.co.uk/technical-services for a full suite of online tools to help with your roof design, specification and fixing.

Feel free to talk to our experts at any time on 01283 722588.

Associated products & fixings

Edgemere Aluminium Nail Pack
Code 30398 (500g)

Edgemere SoloFix Tile Clips
Code 30441 (100 Pack)
Code 30431 (500 Pack)

Universal Batten End Clip
Code 30214 (Pack 56)

Edgemere Dry Verge Starter Kit
Code 53830

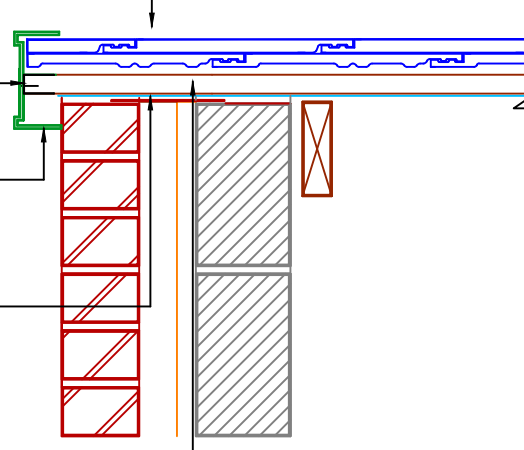
Edgemere Slate
420mm x 330mm
(Code 355)

Universal Batten End Clip
(Code 30214)

Edgemere Dry Verge
Left Hand Dry Verge Unit
(Code 381)

Universal Underlays
Vapour Permeable (Code 33150)
Non-Breathable (Code 33145)

JB Red Treated Battens machine graded to BS5534
38mm x 25mm (rafters 400mm - 450mm)
50mm x 25mm (rafters 450mm - 600mm)



DRAWING NUMBER
41335500

DRAWING REVISION
B

DRAWING TITLE

Edgemere Dry Verge to Brickwork - LH

SCALE

1:10

Edgemere

